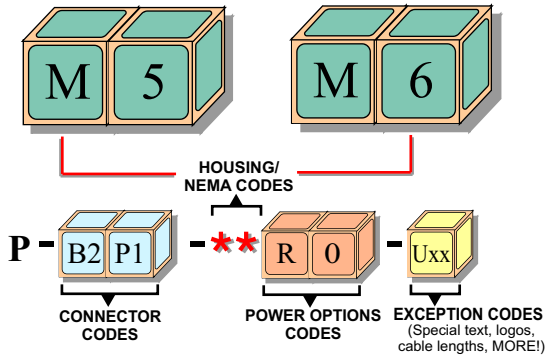


GracePort® Stainless Steel Nema 4X Housing Data Sheet

M5 - #304 Stainless Steel

M6 - #316 Stainless Steel



Keep stainless steel enclosures **CLOSED** with the **NEW #316** stainless steel GracePort® interface. Grace offers thousands of combinations of cables, connectors and outlets, all available to ship in days!

The 100% stainless steel M5 or M6 GracePort® is designed to meet the rigorous requirements of the pharmaceutical, food processing, dairy and chemical industries.

**Now padlockable to meet
FDA regulation #21CFR211**



P-P1P3P5R2-M6R3

⚠️ INSTALLATION

GracePorts® are intended to be mounted in or on an enclosure product. Installation should be performed by a qualified technician and adhere to applicable regulatory codes. These devices are for mounting on the flat surface of enclosures having the same type environmental ratings. All installations:

- 1) Cut or punch panel opening and locate and drill (4) mounting holes appropriate for housing size.
- 2) Connect low voltage interface wiring according to documentation provided with unit.
- 3) Tighten the four nets (standard 8-32 not supplied) on the bottom of the unit until the gasket has been compressed 50% of the original thickness which is .125".

On units configured for optional AC power:

- 1) Wire outlet device. *Note: It is the responsibility of the installer to ensure adequate separation of high and low voltage circuits in the end-use product.*
- 2) Units supplied with optional AC power outlet must be provided with an adjacent marking indicating voltage and maximum current.
- 3) Ensure that the metal housing is reliably grounded using grounding means provided.

SPECIFICATIONS: ELECTRICAL

Low voltage (data), limited to 30 VDC
High voltage supply (for computer use only):
120 VAC, 15A (UL), 5A (CSA)
230-240 VAC, 16A (CE only)

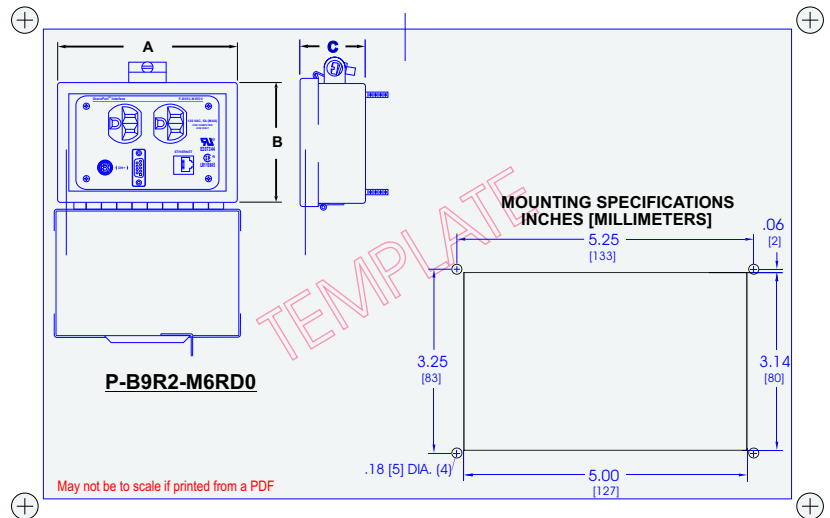
SPECIFICATIONS: MECHANICAL

Housing: Stainless steel base/cover
Insert Material: Acrylic UL94HB

APPROVALS



UL RECOGNIZED: E207344 (Type 4X)
CSA: LR110845 (not for interrupting circuit)
CE: EN61010/EN60950 (Foreign Power Outlets)



NEMA 4X Construction

16 ga. STAINLESS STEEL (#3 GRAIN) SIZE (A x B x C): 6[152] x 4[102] x 2[51]
CLAMP SCREW LID CLOSURE CONTINUOUS HINGE
OIL RESISTANT GASKETING UL LISTED



GRACE
ENGINEERED
PRODUCTS, INC
www.GracePort.com

5001 Tremont Avenue
Davenport, IA 52807

(800) 280-9517 Fax: (563) 386-9639

©2007 Grace Engineered Products, Inc. DataSheets:SS4X:12/2007
GracePort® is a registered Trademark of Grace Engineered Products, Inc.